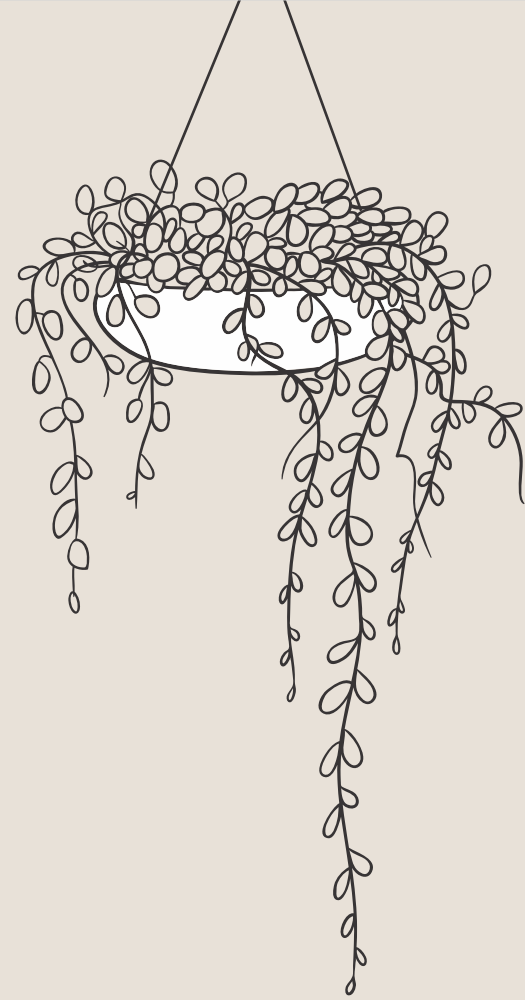


wall tiles

300x
450mm

TRACES OF THE
PAST THAT LEAVE
DISCREETLY
CHARMING SIGNS



Introducing.....
The New World of DIGITAL Ceramic Wall, Floor & Vitrified Tiles from the SILVENTA. The characteristic of any product tiles is implied by its marvelous craftsmanship and chic visual appeal. At SILVENTA this dictum is achieved by excellent aesthetic designing which results by amalgamating advanced DIGITAL Printing technology. With this advanced technique at SILVENTA, ceramic tiles can now be decorated with virtually any type of photo-quality image or design on plain or textured surface of your choice.

Moreover, with the new-age germ-free technology in this tile, your home will have a healthy environment too... SILVENTA CERAMIC is ready with complete innovative DIGITAL Tiles collection i.e, MARBLE, ELEVATION, etc. specially designed & imported from Italy and Spain, to deliver the real effect of Italian marble and elevation stones in India which will be available in the market in sizes 300x600mm, 300x450mm & many more to come.

SILVENTA DIGITAL tiles is now available on display at any of our business partner display centers.

Index

GLOSSY FINISH	04
SATIN MATT FINISH	52
ELEVATION SERIES	58



2047 LT



2047 K1



2047 K2



2047 DK



2047 K3



2047 K4



2047 K5



2047 K6



2047 K7



2047 K8



2047 K9



2047 K10



2047 LT



2047 HL 3



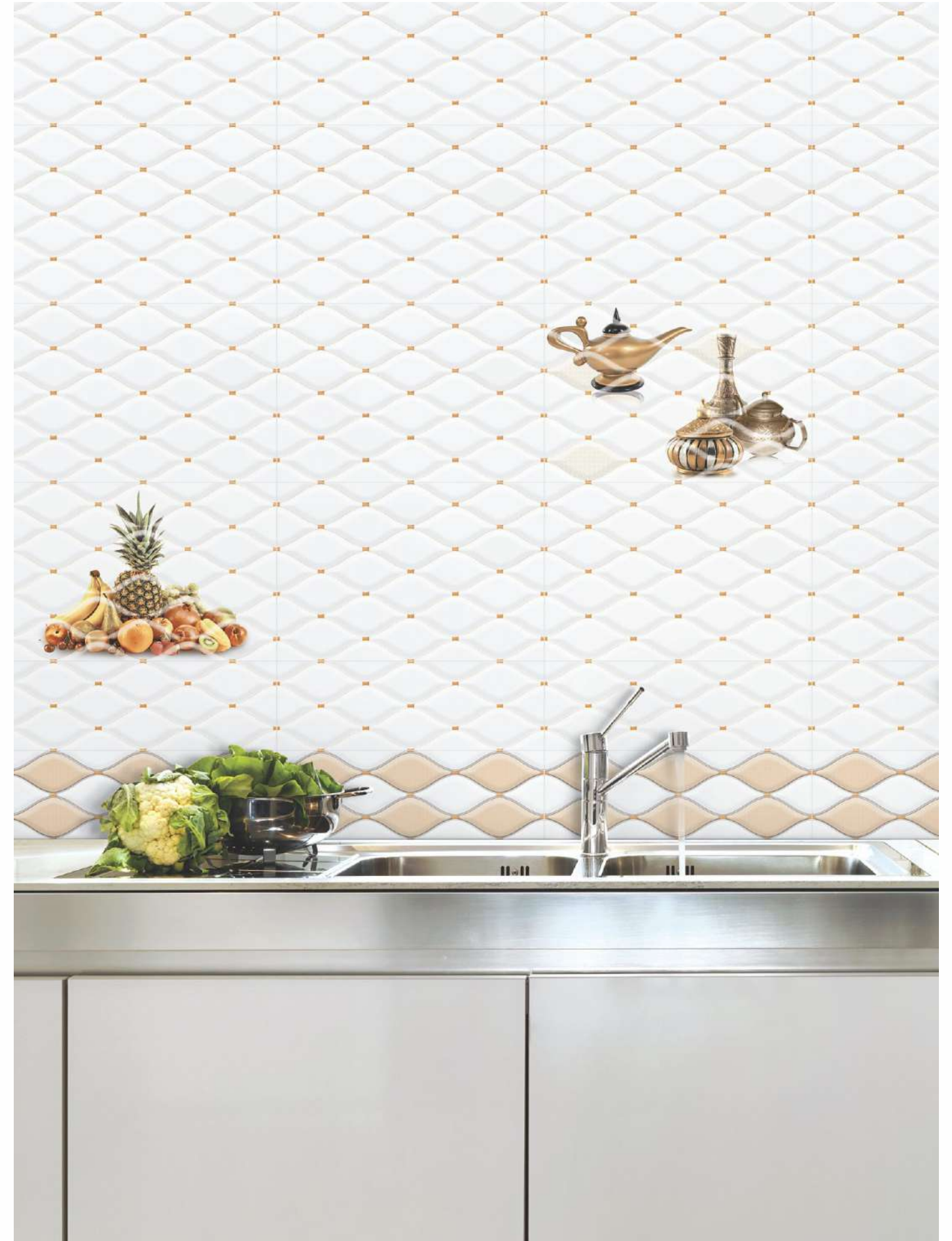
2047 HL 1



2047 HL 2



2047 DK





2023 LT (Random)



2023 HL 1



2023 K1



2023 FL



2023 HL 2



2023 K2



2023 HL 3



2023 K3



2025 LT



2025 HL 2



2025 DK



2025 HL 3



2025 FL



2052 LT



2052 HL 1



2052 DK



2052 HL 2

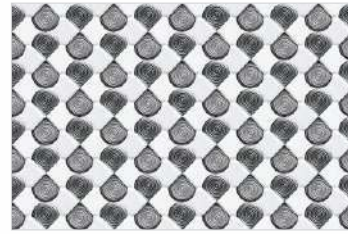


2052 FL

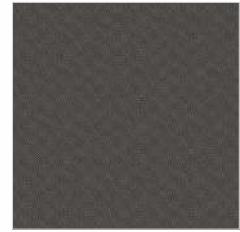




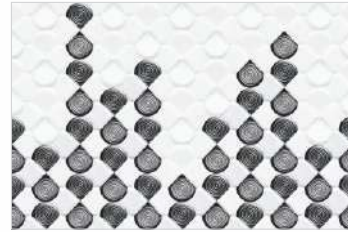
2032 LT



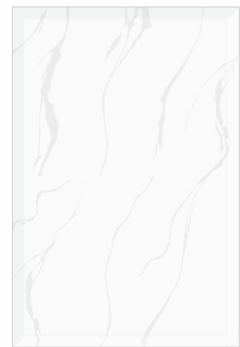
2032 HL 1



2008-F9 FL



2032 HL 2



2066 LT



2066 HL 1



2066 HL



2066 HL 3



2066 HL 4



2069 LT



2069 HL 1



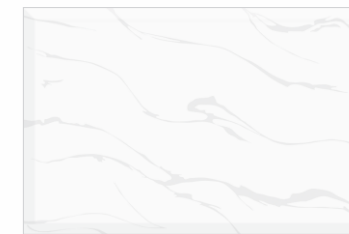
2069 DK



2069HL 2



2069 FL



2066 LT



2066 K1



2066 K2



2066 K3



2066 K4



2066 K5



2066 K6



2066 K7



2068 LT



2068 HL 1



2068 HL 2



2068 HL 3



2068 K1



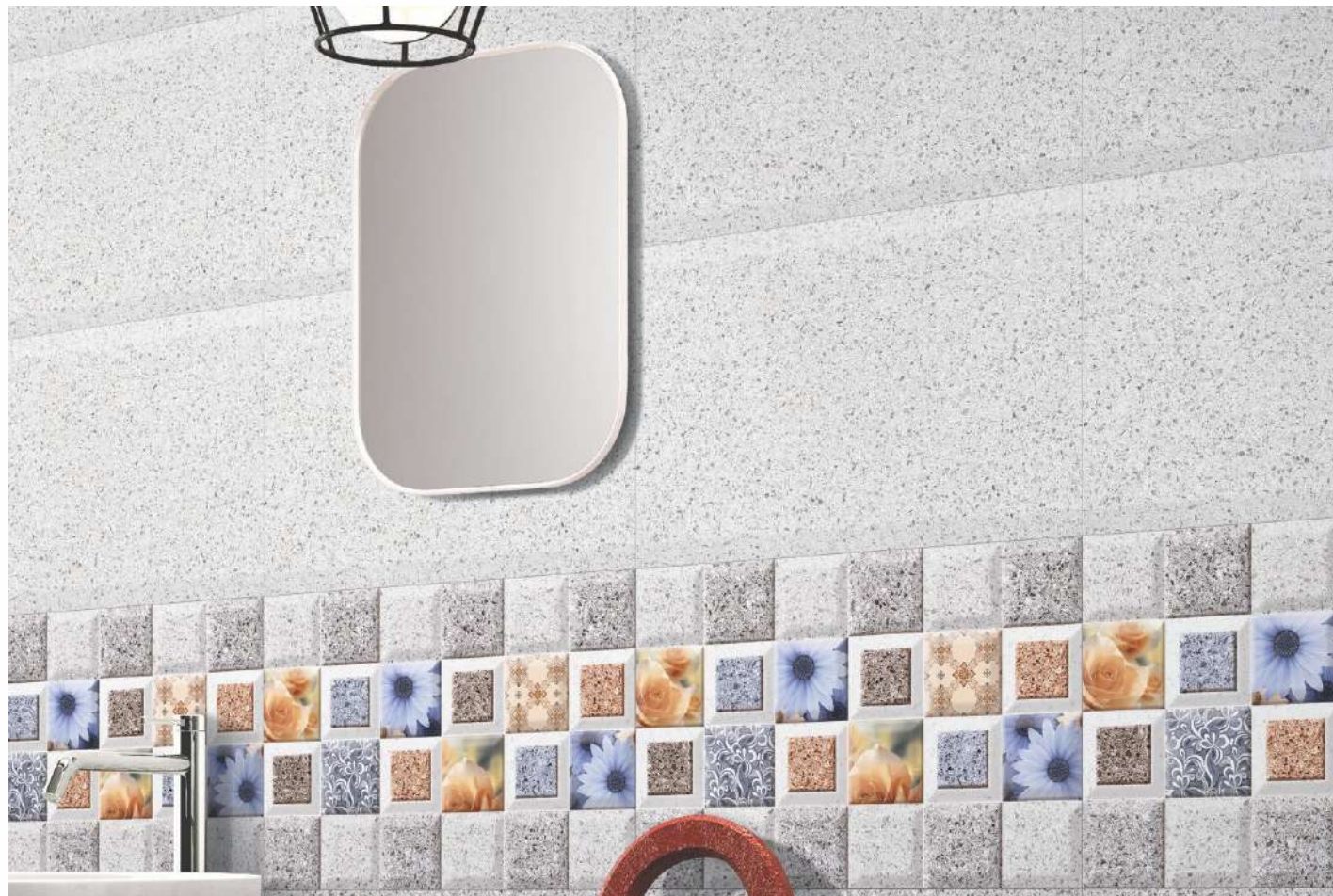
2068 K2



2068 DK



2068 FL



2074 LT



2074 HL 1



2074 HL 2



2074 DK



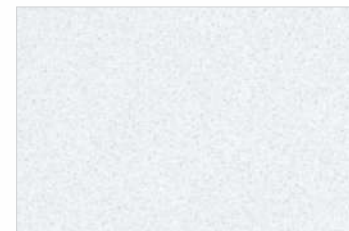
2074 K1



2074 K2



2074 FL



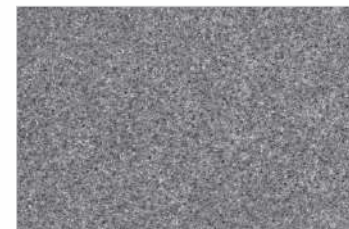
2075 LT



2075 HL 1



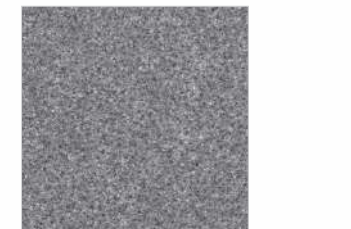
2075 HL 2



2075 DK



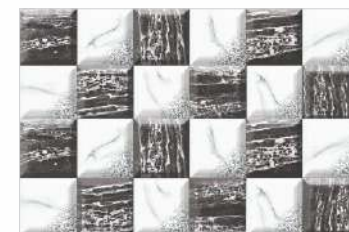
2075 HL 3



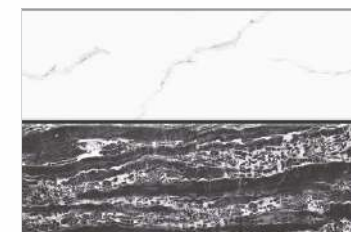
2075 FL



2077 LT



2077 HL 1



2077 HL 2



2077 DK



2077 HL 3



2077 FL



2078 LT



2078 HL 1



2078 DK



2078 HL 3



2078 FL



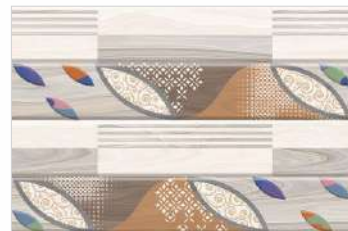
2081 LT



2081 HL 1



2081 DK



2081 HL 2



2081 FL



2082 LT



2082 HL 1



2082 HL 2



2082 DK



2082 HL 3



2082 FL



2087 LT



2087 K1



2087 K2



2087 K3



2087 K4



2087 K5



2087 K6





2086 LT



2086 HL 1



2086 K1



2086 K2



2091 LT



2091 K1



2091 K2



2091 DK



2091 HL 1



2091 FL



2089 LT



2089 HL 1



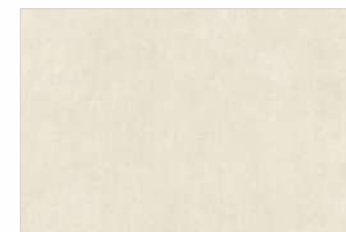
2089 DK



2089 HL 2



2089 FL



2093 LT



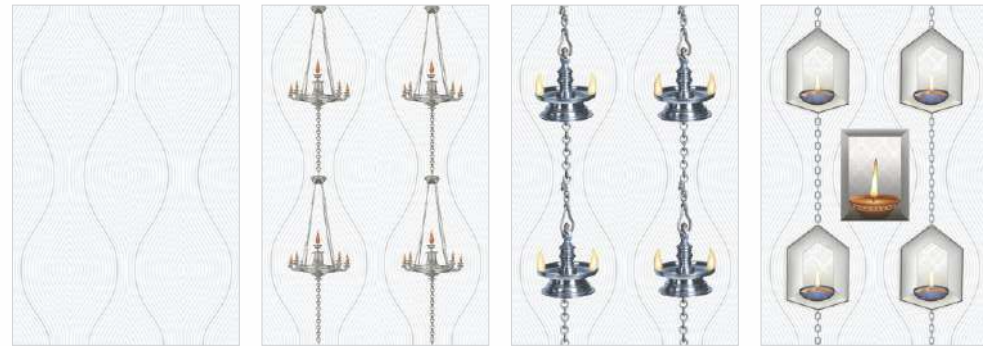
2093 HL 1



2093 DK



2093 FL



2099 LT 2099 HL 1 2099 HL 2 2099 HL 4



2109 LT 2109 K1 2109 K2



2109 DK 2109 HL 1 2109 FL



2105 LT 2105 K1



2105 DK 2105 K2



2107 LT 2107 K1 (Random) 2107 K2 (Random) 2107 K3



2107 K3 2107 K4





2106 LT



2106 HL 1



2106 HL 2



2106 K1



2106 K2



2106 K3



2106 K4



2106 K5



2106 K6



2106 DK



2106 FL



2110 LT



2110 HL 1



2110 HL 3



2110 DK



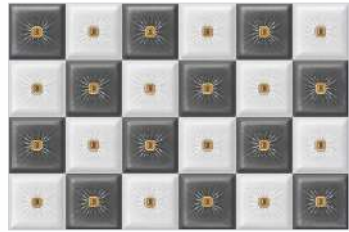
2110 K1



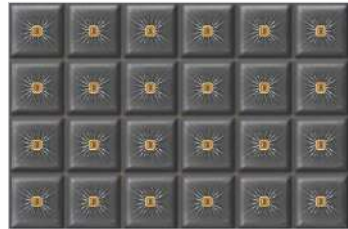
2110 FL



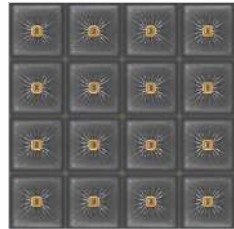
2111 LT



2111 HL 1



2111 DK



2111 FL



2114 LT



2114 HL 1



2114 DK



2114 FL



2116 LT



2116 HL 1



2116 HL 2



2116 DK



2116 K1



2116 K2



2116 FL



2115 LT



2115 HL 1



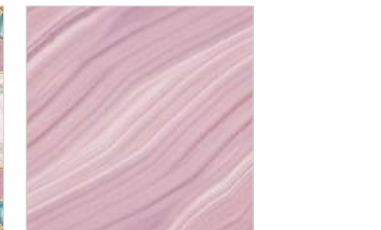
2115 HL 2



2115 DK



2115 HL 3



2115 FL



2117 LT



2117 HL 1



2117 DK



2117 HL 2



2117 FL



2121 LT



2121 HL 1



2121 K1



2126 LT



2126 HL 1



2126 HL 2



2126 DK



2126 HL 3



2126 FL



2128 LT



2128 HL 1



2128 DK



2128 HL 2



2128 FL



2130 LT



2130 HL 1



2130 DK



2130 HL 2



2130 FL



2135 LT



2135 HL 1



2135 DK



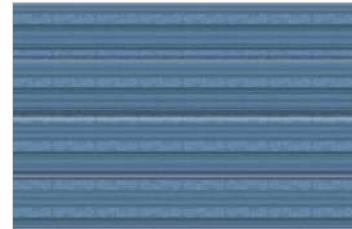
2135 FL



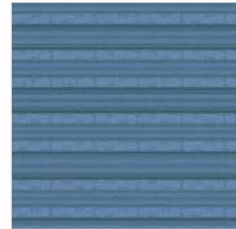
2136 LT



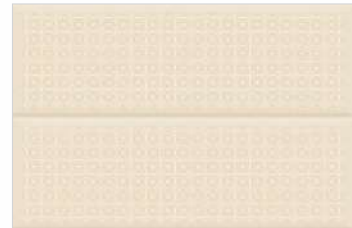
2136 HL 1



2136 DK



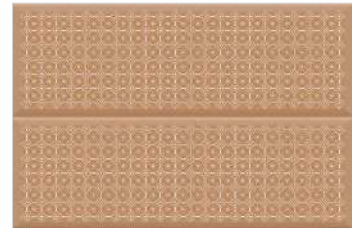
2136 FL



2137 LT



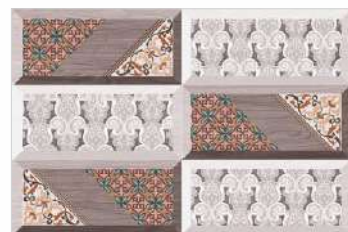
2137 K1



2137 DK



2141 LT



2141 HL 1



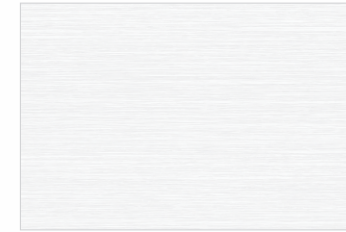
2141 DK



2141 K1



2141 FL



2145 LT



2145 HL 1



2145 HL 2



2145 HL 9



2145 HL 10



2145 HL 17



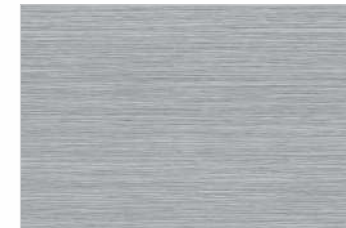
2145 K1



2145 K2



2145 K6



2145 DK 1



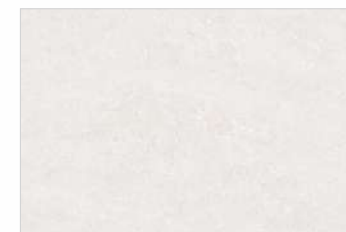
2145 DK 2



2145 FL 1



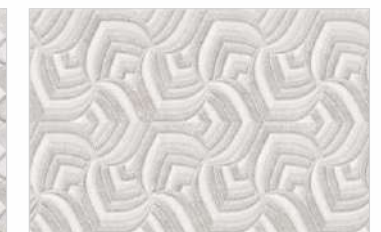
2145 FL 2



2148 LT



2148 HL 1



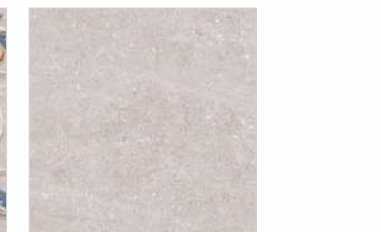
2148 HL 2



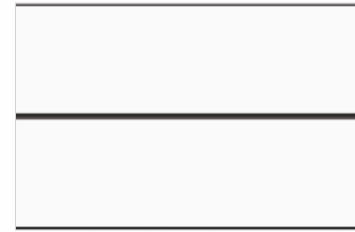
2148 DK



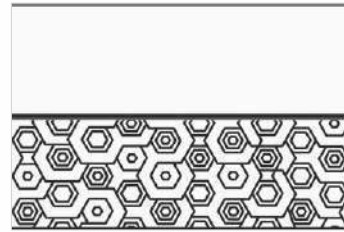
2148 HL 4



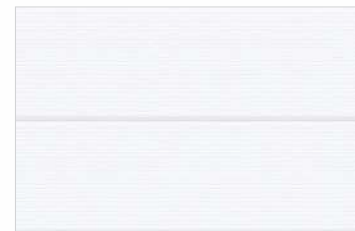
2148 FL



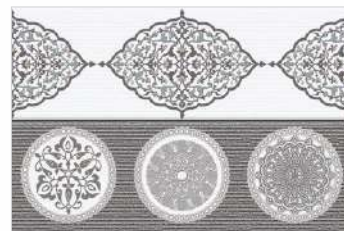
2149 LT



2149 HL 1



2150 LT



2150 HL 1



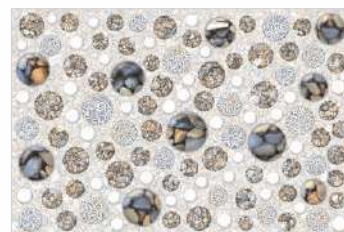
2150 DK



2150 FL



2158 LT



2158 HL 1



2158 DK



2158 HL 3



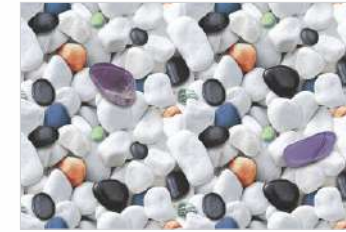
2158 FL



2154 LT



2154 HL 1



2154 DK



2154 HL 2

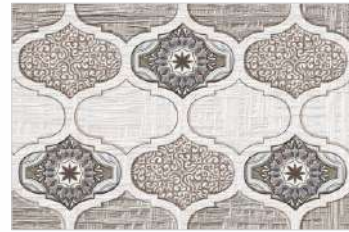


2154 FL





2159 LT



2159 HL 1



2159 DK



2159 FL



2164 LT



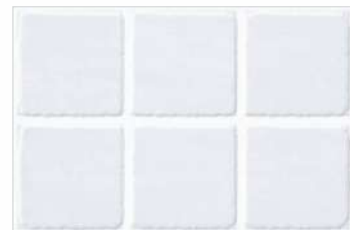
2164 K1



2164 DK



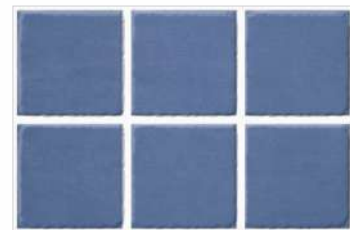
2164 FL



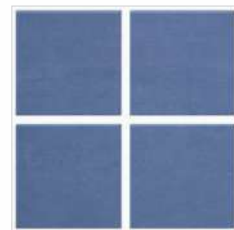
2166 LT



2166 HL 1



2166 DK



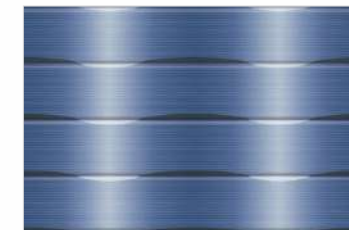
2166 FL



2165 LT



2165 HL 1



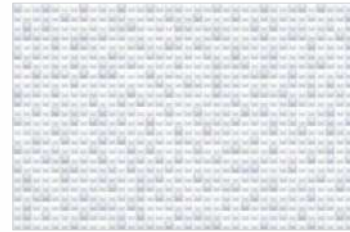
2165 DK



2165 HL 2



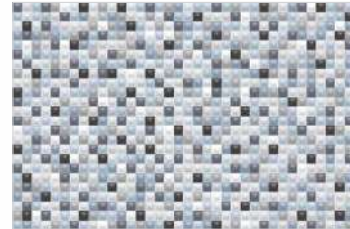
2165 FL



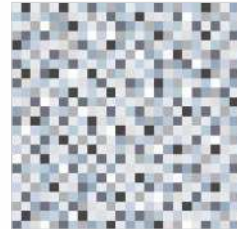
2167 LT



2167 HL 1



2167 DK



2167 FL



2168 LT



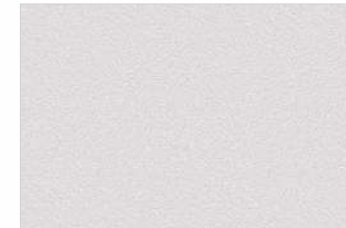
2168 HL 1



2168 DK



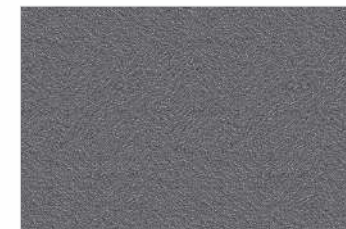
2168 FL



2160 LT



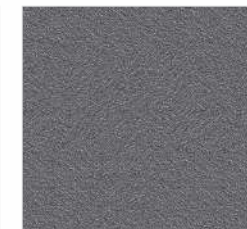
2160 HL 1



2160 DK



2160 K1



2160 FL



2171 LT



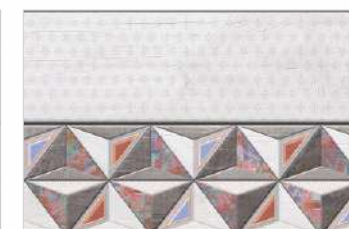
2171 K1



2171 K2



2171 DK



2171 HL 1



2171 FL

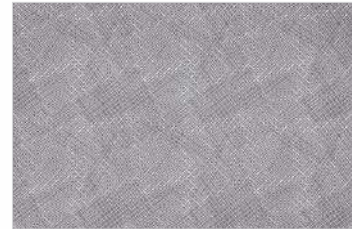




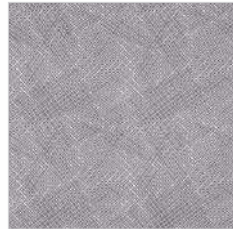
2172 LT



2172 HL 1



2172 DK



2172 FL



2174 LT



2174 K1



2174 K2



2174 K3



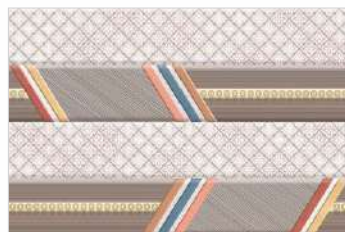
2175 LT



2175 HL 1



2175 DK



2175 HL 2



2175 FL



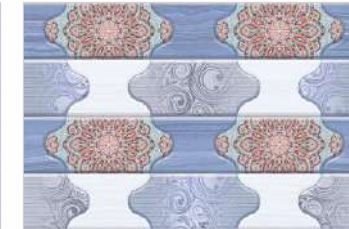
2176 LT



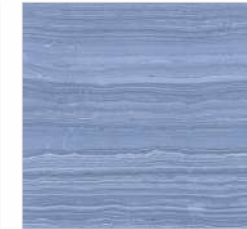
2176 HL 1



2176 DK



2176 HL 2



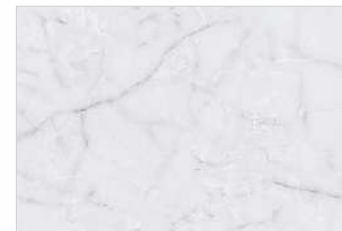
2176 FL



2177 LT



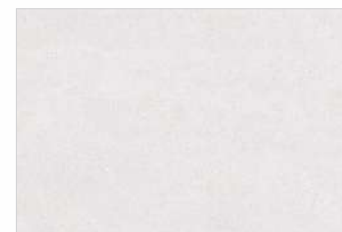
2177 HL 1



2177 DK



2177 FL



2178 LT



2178 HL 1



2178 DK



2178 FL



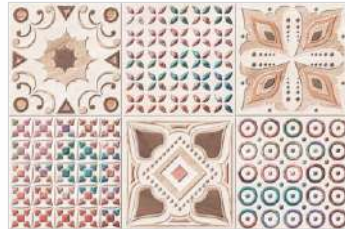
2181 LT



2181 HL 1



2181 DK



2181 HL 2



2181 FL



2182 LT



2182 HL 1



2182 DK



2182 HL 2



2182 FL



2183 LT



2183 HL 1



2183 K1



2183 K2



2184 LT



2184 HL 1



2184 FL



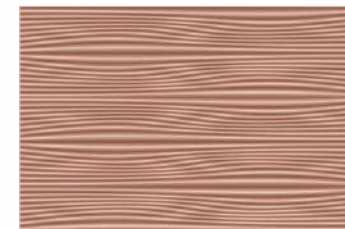
2184 K1



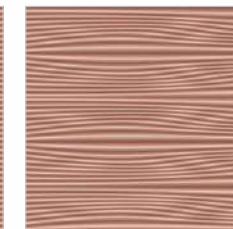
2185 LT



2185 HL 1



2185 DK



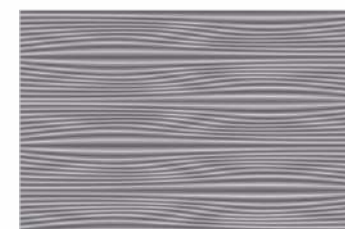
2185 FL



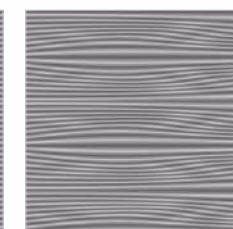
2186 LT



2186 HL 1



2186 DK



2186 FL



2187 LT



2187 K1



2187 K2



2187 DK



2187 HL 1



2187 FL



2189 LT



2189 HL 1



2189 DK



2189 FL



2190 LT



2190 K1



2190 FL



2190 HL 1



2191 LT



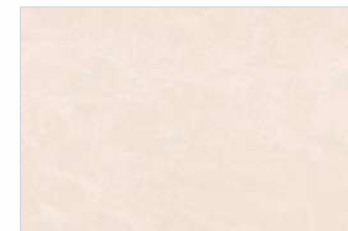
2191 K1



2191 DK



2191 K2



2192 LT



2192 HL 1



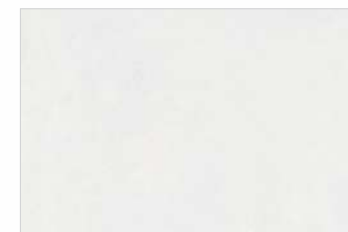
2192 DK



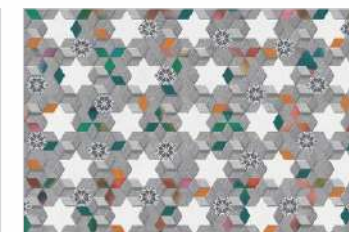
2192 HL 2



2192 FL



2193 LT



2193 HL 1



2193 DK



2193 FL



2195 LT



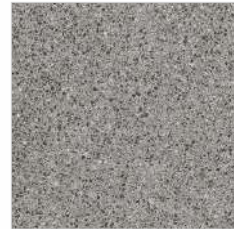
2195 HL 1



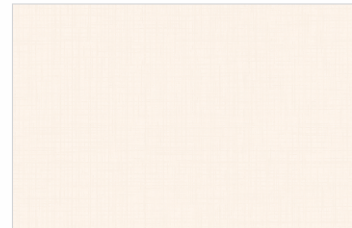
2195 DK



2195 HL 2



2195 FL



2196 LT



2196 HL 1



2196 DK



2196 FL



2197 LT



2197 HL 1 AB



2197 DK



2197 FL



2198 LT



2198 HL 1



2198 DK



2198 FL



2201 LT



2201 HL 1



2201 HL 3



2201 K1

(Random)



2201 K2



2201 K 3



2201 DK



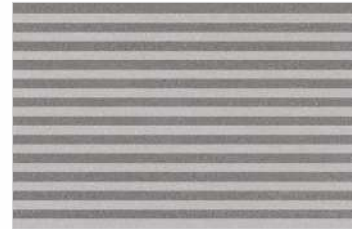
2201 FL



2203 LT



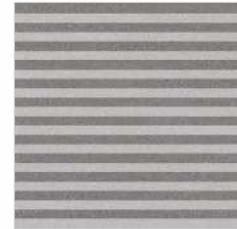
2203 HL 1



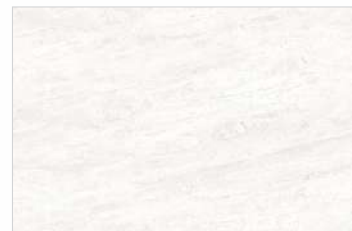
2203 DK



2203 HL 2



2203 FL



2204 LT



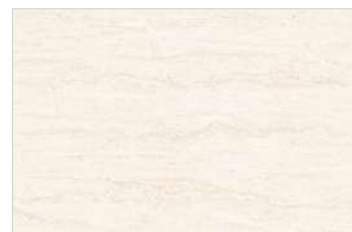
2204 HL 1



2204 DK



2204 FL



2205 LT



2205 HL 1



2205 DK



2205 FL



2206 LT



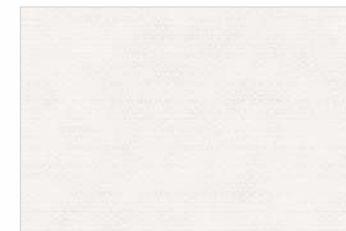
2206 HL 1



2206 DK



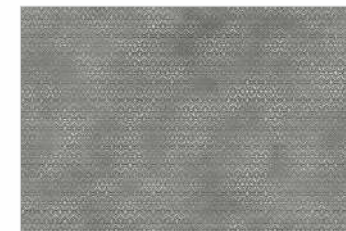
2206 FL



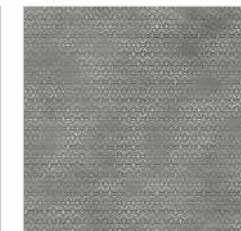
2207 LT



2207 HL 1



2207 DK



2207 FL



2208 LT



2208 HL 1



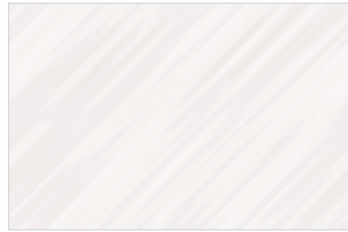
2208 DK



2208 HL 2



2208 FL



2209 LT



2209 HL 1



2209 HL 1



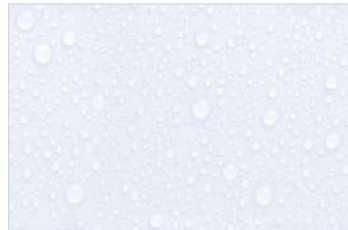
2209 DK



2209 HL 2 AB



2209 FL



2210 LT



2210 HL 2



2210 HL 1 AB



2210 DK



2210 HL 3



2210 HL 1 AB



2210 FL



2211 LT



2211 HL 1



2211 DK



2211 HL 2



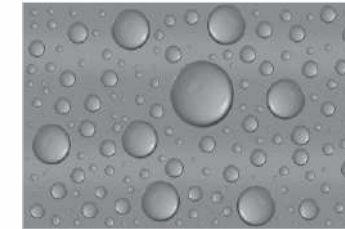
2211 FL



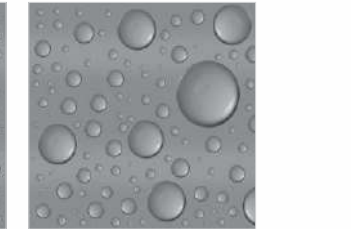
2212 LT



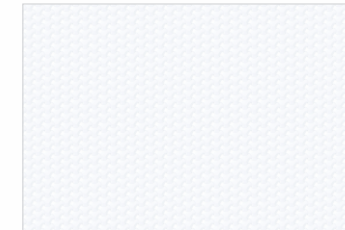
2212 HL 1



2212 DK



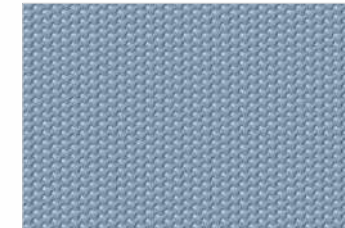
2212 FL



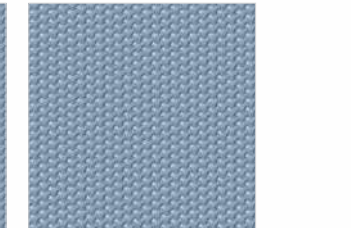
2217 LT



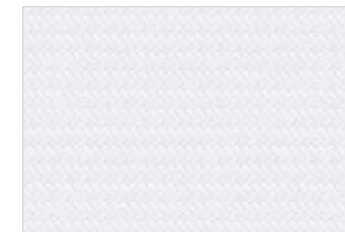
2217 HL 1



2217 DK



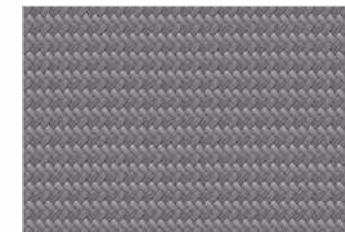
2217 FL



2221 LT



2221 HL 1



2221 DK



2221 FL



2222 LT



2222 HL 1



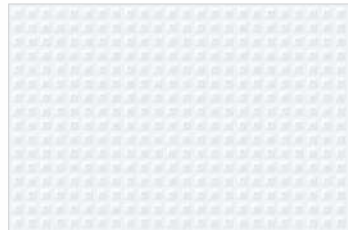
2222 DK



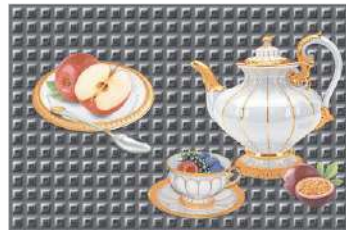
2222 HL 2



2222 FL



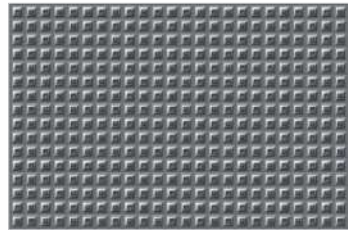
2224 LT



2224 K1



2224 K2



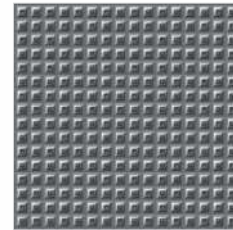
2224 DK



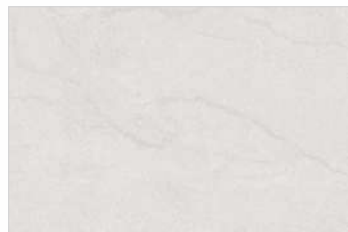
2224 K3



2224 K4



2224 FL



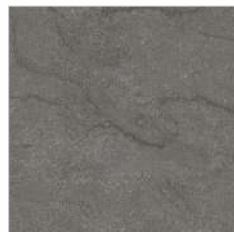
2225 LT



2225 HL 1



2225 DK



2225 FL



2226 LT



2226 HL 1



2226 DK



2226 FL



2227 LT



2227 K1



2227 K2



2227 DK



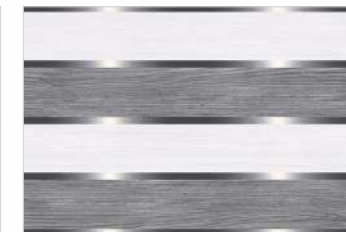
2227 HL 1



2227 FL



2228 LT



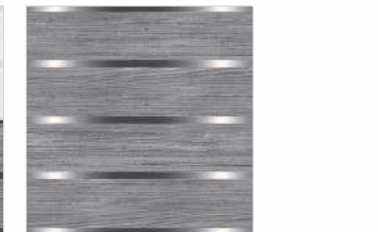
2228 HL 1



2228 DK



2228 K1



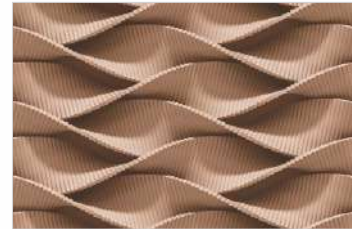
2228 FL



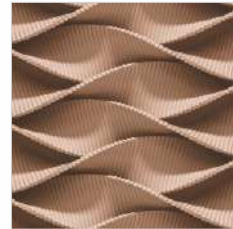
2229 LT



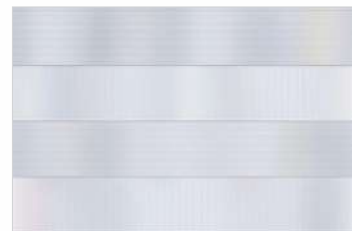
2229 HL 1



2229 DK



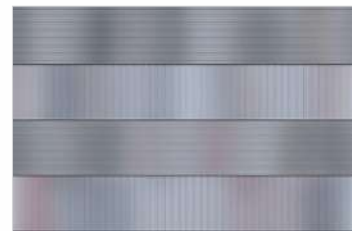
2229 FL



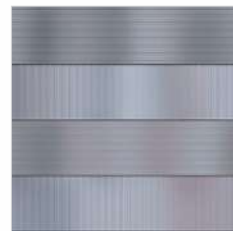
2230 LT



2230 HL 1



2230 DK



2230 FL



2301 LT



2301 K1



2301 K2



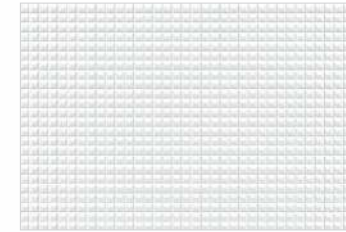
2301 HL 1



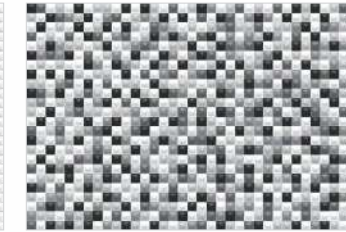
2301 K3



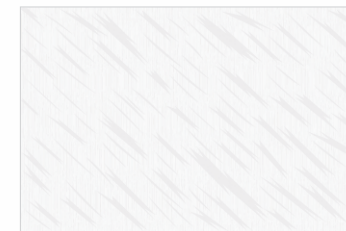
2301 K4



2302 LT



2302 HL 1



2303 LT



2303 HL 5



2303 K1



2303 HL 1



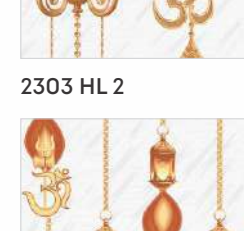
2303 HL 2



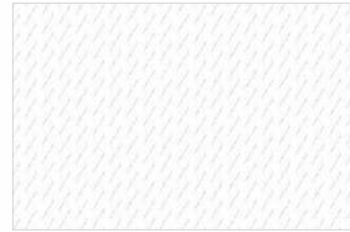
2303 K2



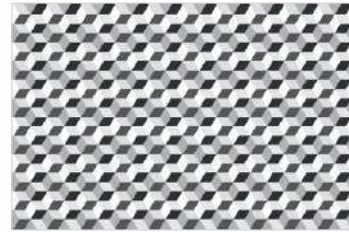
2303 HL 3



2303 HL 4



2304 LT



2304 HL 1



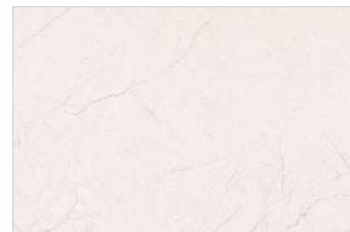
2305 LT



2305 HL 1



2305 FL



4008 LT



4008 HL 1



4008 DK



4008 FL



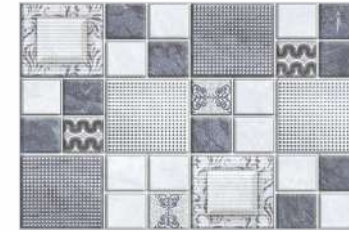
4009 LT



4009 HL 1



4009 DK



4009 HL 2



4009 FL





201 LT



201 K1 R1



201 K1 R2



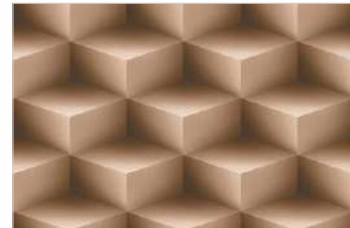
201 K1 R3



204 LT



204 K1 (Random)



204 DK



206 LT



206 K1 (Random)



206 DK



308 LT



308 HL 1



308 K1 (Random)



308 DK



308 HL 2



308 K2 (Random)



308 FL



309 LT



310 HL 1



310 DK



310 HL 2



310 FL



309 LT



310 HL 1



310 DK



310 HL 2



310 FL



313 HL 1 AB



313 HL 2 AB



313 DK



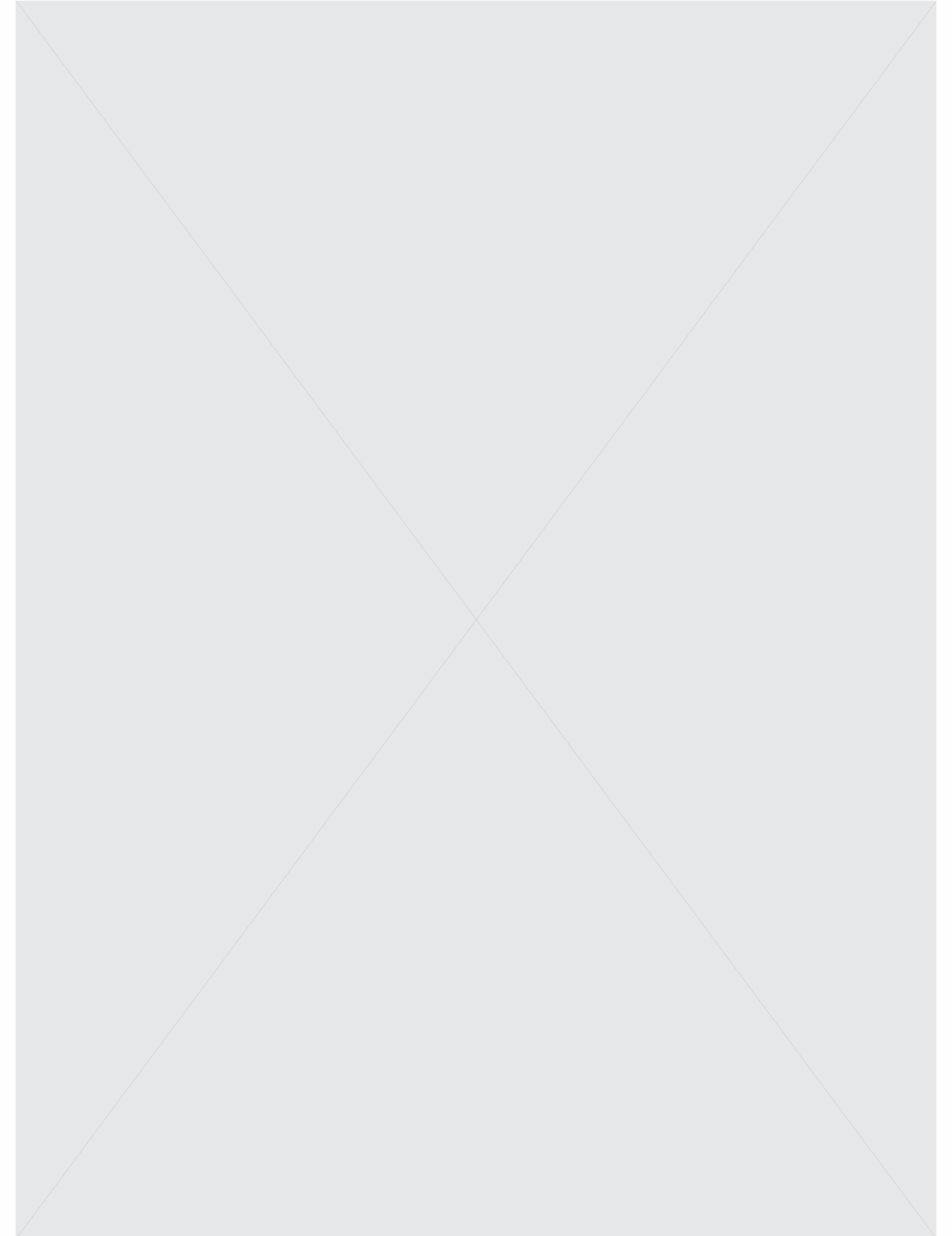
313 FL



313 DK



313 FL





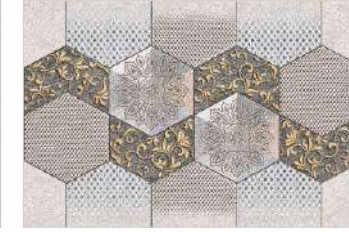
2421 LT



2421 HL 1



2421 DK



2421 HL 2



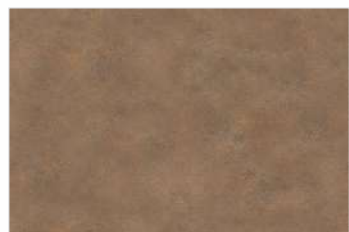
2421 FL



2418 LT



2418 HL 1



2418 DK



2418 FL



2419 LT



2419 HL 2



2419 DK



2419 HL 3



2419 FL



2422 LT



2422 HL 1



2422 DK



2422 HL 2



2422 FL



2442 LT



2442 HL 1



2442 DK



2442 K1



2442 FL



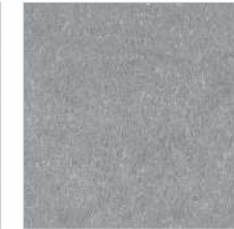
2446 LT



2446 HL 1



2446 DK



2446 FL



2451 LT



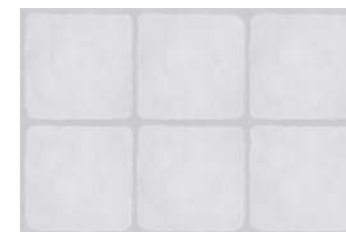
2451 HL 1



2451 DK



2451 FL



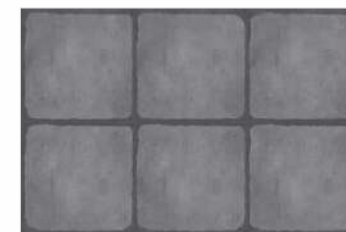
2452 LT



2452 K1



2452 K2



2452 DK



2452 HL 1



2452 FL



2453 LT



2453 HL 1



2453 DK



2453 HL 2



2453 FL



2457 LT



2457 HL



2457 DK



2457 FL



2458 LT



2458 HL 1



2458 DK



2458 HL 2



2458 FL



2459 LT



2459 HL 1



2459 HL 2



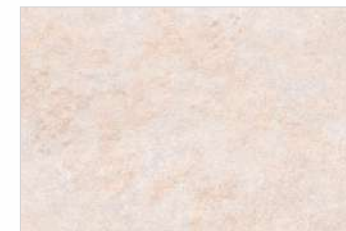
2459 DK



2459 HL 3



2459 FL



2460 LT



2460 HL 1



2460 DK



2460 FL



2461 LT



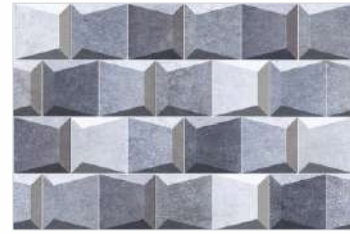
2461 HL 1



2461 DK



2461 FL



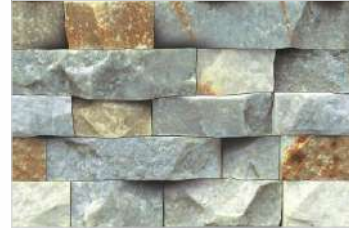
2506



2507



2511



2516



2517



2521



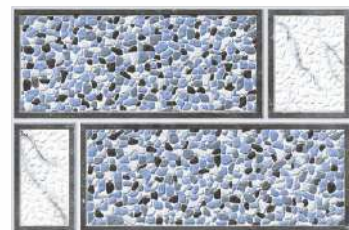
2522



2523



2525



2528



2529



2533



2538

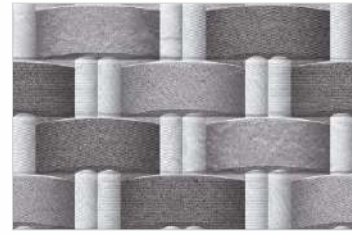


2539



2540





2549



2550



2551



2552



2553



2554



2555



2556



2557



2558



2559



2560



2561



2562



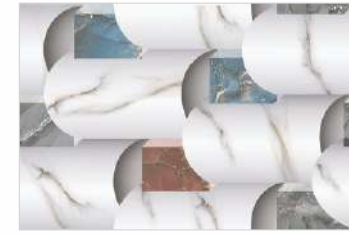
2563



2564



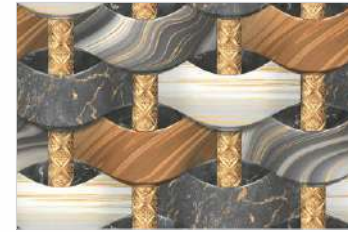
2565



2566



2567



2568



2569



2570



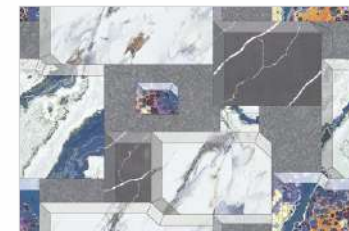
2571



2572



2573



2574



2833



2832



2833



2835



2836



2837



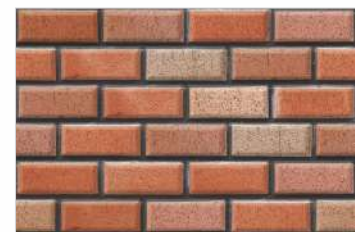
2802



2803



2804



2805



2807





2601



2604



2605



2623



2624



2627



2628



2629



2630



2631



2632



2633



2634



2635



2636



2637



2638



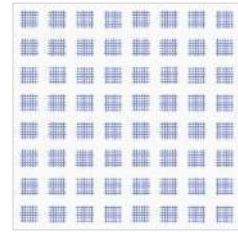
2642



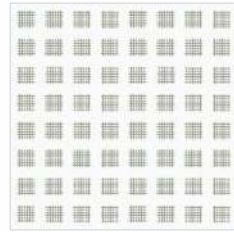
2643



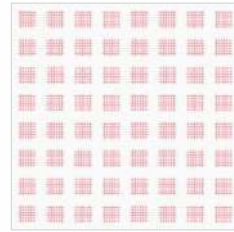
2644



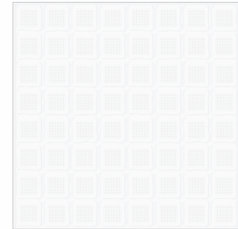
RF Blue



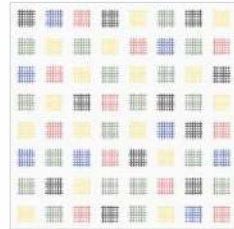
RF Green



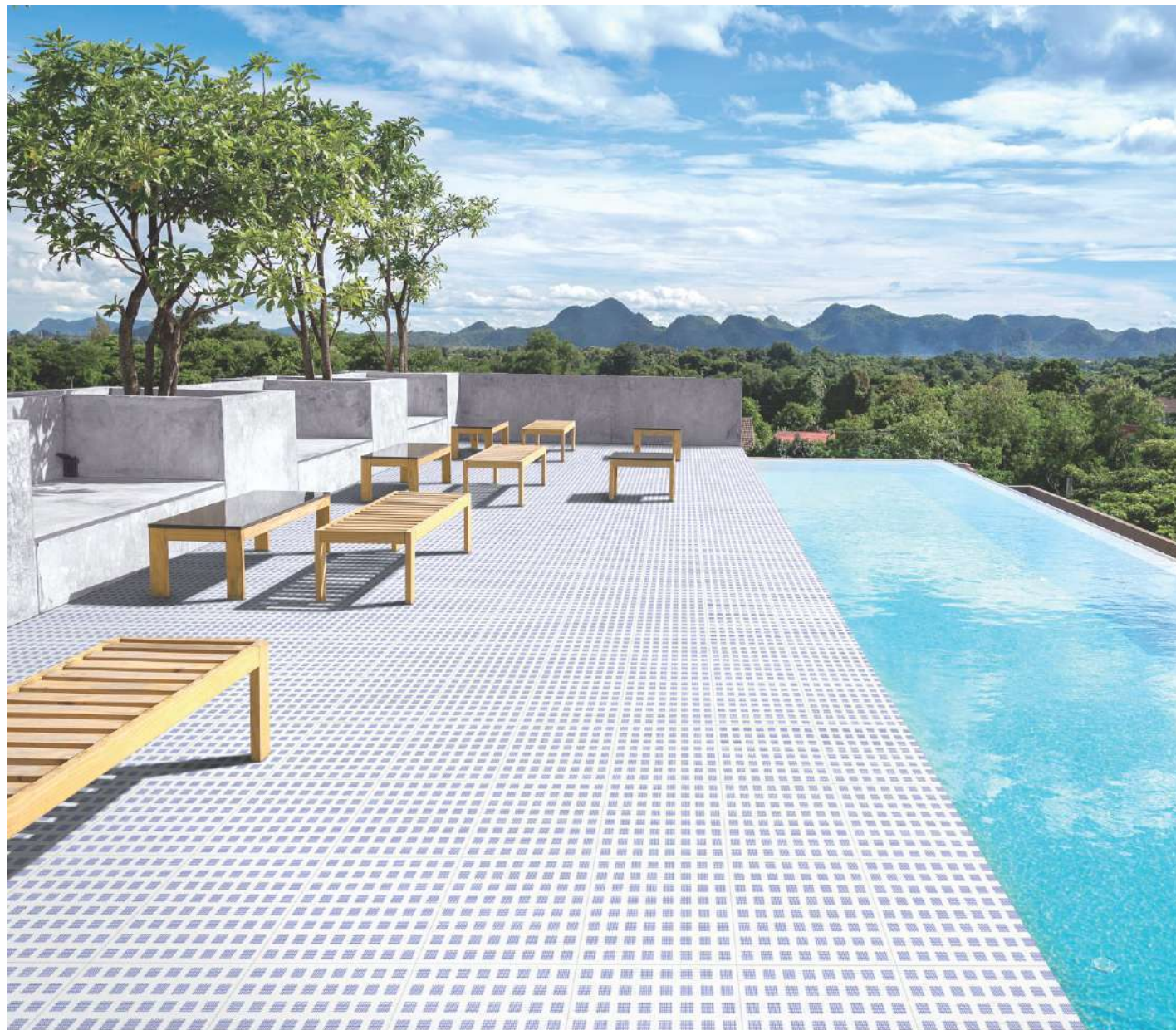
RF Pink



RF White



RF Multy



TECHNICAL SPECIFICATION

Characteristics	Euro Standards EN - 159 / IS 13753	SILVENTA VALUE
DIMENSION & SURFACE QUALITY		
Dimension	± 0.5%	± 0.2%
Deviation in Thickness	± 0.6 mm	± 0.2 mm
Straightness of sides	± 0.3%	± 0.2%
Rectangularity	± 0.5%	± 0.3%
Surface Flatness	± 0.5%	± 0.3%
Surface Quality	Min. 95%	Min. 96%

PHYSICAL PROPERTIES

Water Absorption	> 10%	13.5%
Bending Strength	> 150 kg/cm ²	200 - 250 kg/cm ²
Scratch hardness (Mohs)	Min. 3	Min. 3
Crazing	1 Cycle	No Crazing at 5 Cycles

CHEMICAL PROPERTIES

Staining Resistance	Min. Class 2	Resistance to all Acids And Alkalies & Household Chemicals, except Hydro Flouric Acid
Household Chemical	Min. Class B	

THERMAL PROPERTIES

Thermal Shock	Resistant to 10 Cycles	CONFORMS
Thermal Expansion	Max. 9E -06	CONFORMS

Our Conformity to the above standard is applicable only for premium quality

PACKING DETAIL

Size	Thickness (Approx.)	Tiles Per Box	Coverage Area Per Box	Wt. of Box (Approx.)
300x450mm	8 mm	6 pcs.	0.81 sq. mtr.	11 kg.
300x300mm(Floor)	8 mm	8 pcs.	0.72 sq. mtr.	9.5 kg.



Silventa Ceramic Tiles Pvt. Ltd.

Jetpar Road, Near Narmada Canal, Survey No. 464,
At. Jasmagadh, Dist. Morbi. (Guj.) INDIA

m: +91 99789 40455, +91 90990 10311

e : info@silventaceraamic.com

w : www.silventaceraamic.com